



INDUSTRIAL MINING COMPANY

**SHAHAB SANG**

*Symphony of Nature*



INDUSTRIAL MINING COMPANY  
**SHAHAB SANG**  
[www.shahab-sang.com](http://www.shahab-sang.com)

**Shahab Sang Mining Industries** (private joint stock) was founded in 1991 to explore, extract and process minerals. Having bright experience in mining industries, (dimensional) building stones in particular, Shahab Sang Mining Industries operates as one of the major suppliers of dimensional stones in the country and enjoys a major market share in domestic and international consumption markets. Equipped with experienced and skillful staff and also the knowledge and technology, the company utilizes modern mining methods.

At the same time, Shahab Sang Mining Industries supplies a major part of domestic and foreign markets demand by exploiting a number of great mines located in Iran's provinces as follows:

1. Sabzan, Kerman Province: a Chromite Mine
2. Bahabad, Yazd Province: Partavousi Marble
3. Bagh e Bid, Nir, Yazd Province: Onyx and travertine
4. Bagh Malek, Markazi Province: white travertine
5. Salmas, Azerbaijan Province: travertine
6. Harsin, Kermanshah Province: cream Marble
7. Persian Marble, Isfahan Province: Pink cream Marble
8. Tehran, Tehran Province: Shahid Broojerdi Sand and gravel Complex

Further, attendance of Shahab Sang Mining Industries at highly rated foreign exhibitions has made Shahab Sang Mining Industries and its products well-known in foreign markets of the Persian Gulf, China, Eastern Asia, Russia and Europe which are interested in these products.





## INDUSTRIAL MINING COMPANY SHAHAB SANG

Partavousi Marble Quarry  
(Bahabad, YAZD)



Harsin Marble Quarry  
(Harsin, KERMANSHAH)



Atashkouh White Travertine Quarry  
(Mahallat, MARKAZI)



Persian Marble Quarry  
(Khor & Biabanak, ISFAHAN)



Nir Onyx Quarry  
(Bagh e Bid Nir, YAZD)



Sabzan Chromite Mine  
(Faryab, KERMAN)



Boroujerdi Sand & Gravel Complex  
(Azadegan Highway, TEHRAN)



Central Office & Showroom  
(Tehran, IRAN)







● *Technical specifications of quarry*

Definitive reserve	640,000 ton
Geological reserve	2,500,000 ton
Annual production capacity	100,000 ton
Max. monthly production capacity	13,000 ton

Quarry add: 12th Chadormaloo road, Bahabad, Yazd - IRAN



**SHAHAB SANG**

Partavousi  
Marble  
Quarry

Bahabad, YAZD





SHM-LP

Shahab Sang Marble - Linear Partavousi



SHM-CP

Shahab Sang Marble - Circle Partavousi

● PHYSICAL ANALYSES of MARBLE

Specific Weight	2.62 Ton / m <sup>3</sup>
Porosity	4.78%
Water Absorbntion	1.64%
Compressive strength (In Dry)	625 kg / cm <sup>2</sup>
Softening	0.91%



Partavousi Marble

A PANEL OF  
PAST LIFE IN  
TODAY'S STONE  
FRAME

● Partavousi Marble Quarry  
Bahabad, YAZD



SHAHAB SANG





Harsin Marble Quarry (Harsin, KERMANSHAH)



• *Technical specifications of quarry*

Definitive reserve	1,340,000 ton
Geological reserve	1,916,000 ton
Annual production capacity	90,000 ton
Max. monthly production capacity	8,000 ton

Quarry add: Shahmaleki Vilage, Sararood Road, 12th KM Bistoon Road, Taghbostan Blvd., Kermanshah, IRAN



**SHAHAB SANG**

Harsin  
Marble  
Quarry

Harsin, KERMANSHAH





## Harsin marble

COMFORT and  
ELEGANCE  
With  
RESISTANCE

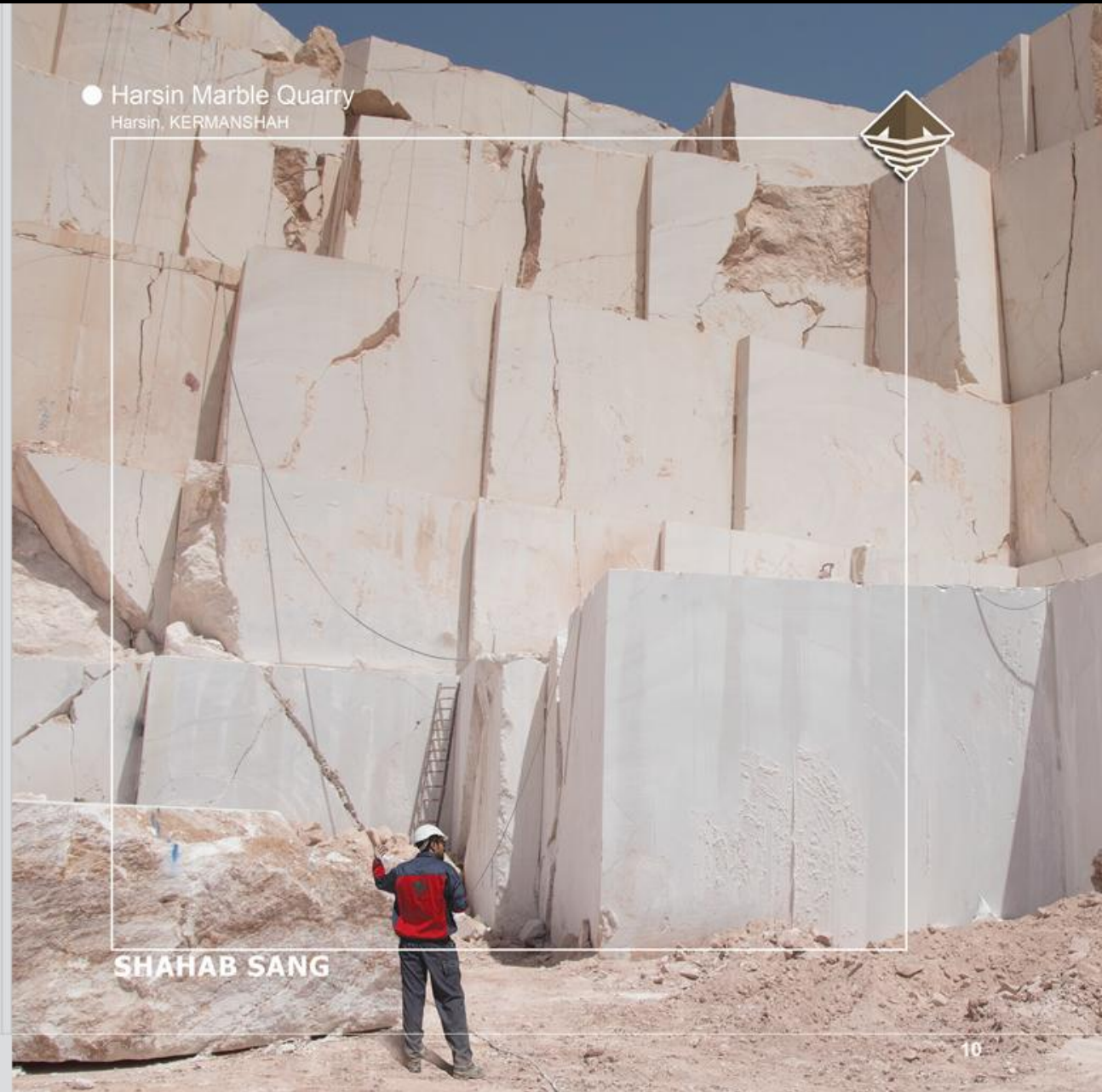
SHM-H

Shahab Sang Marble - Harsin

### ● PHYSICAL ANALYSES of MARBLE

Specific Weight	2.64 Ton / m <sup>3</sup>
Porosity	2.50%
Water Absorbtion	0.95%
Compressive strength (In Dry)	980 kg / cm <sup>2</sup>
Softening	0.67%

● Harsin Marble Quarry  
Harsin, KERMANSHAH



SHAHAB SANG



● *Technical specifications of quarry*

Definitive reserve	480,000 ton
Geological reserve	730,000 ton
Annual production capacity	50,000 ton
Max. monthly production capacity	10,000 ton

Quarry add: 4th km, Atashkooch Road, Nimvar, Mahallat, Markazi - IRAN



**SHAHAB SANG**

Atashkooch  
White  
Travertine  
Quarry

Mahallat, MARKAZI





## Atashkooch Travertine

HOT SPRINGS  
GUSHING FROM  
THE HEART OF  
COLD EARTH

### SHT-AV

Shahab Sang Travertine - Atashkooch Vein Cut

### SHT-AC

Shahab Sang Travertine - Atashkooch Cross Cut

### ● PHYSICAL ANALYSES of MARBLE

Specific Weight	2.52 Ton / m <sup>3</sup>
Porosity	5.05%
Water Absorbtion	0.79%
Compressive strength (In Dry)	303.5 kg / cm <sup>2</sup>
Softening	90%

### ● Atashkooch White Travertine Quarry Mahallat, MARKAZI



SHAHAB SANG





● Technical specifications of quarry

Definitive reserve	595,000 ton
Geological reserve	1,000,000 ton
Annual production capacity	60,000 ton
Max. monthly production capacity	5,000 ton

Quarry add: 15th km, Ab-e-Garm Road, Khooz & Biabanak, Isfahan - IRAN



**SHAHAB SANG**

Persian  
Marble  
Quarry

Biabanak, ISFAHAN





## Persian Marble

THE ELEGANCE  
of NATURE,  
BEAUTIFUL AS  
SUN of THE PERSIA



SHM-PT1

Shahab Sang Marble - Persian Type 1



SHM-PT2

Shahab Sang Marble - Persian Type 2

### ● PHYSICAL ANALYSES of MARBLE

Specific Weight	2.6 Ton / m <sup>3</sup>
Porosity	2.50%
Water Absorbtion	0.95%
Compressive strength (In Dry)	.....
Softening	99 %

### ● Persian Marble Quarry Koor & Biabanak, ISFAHAN

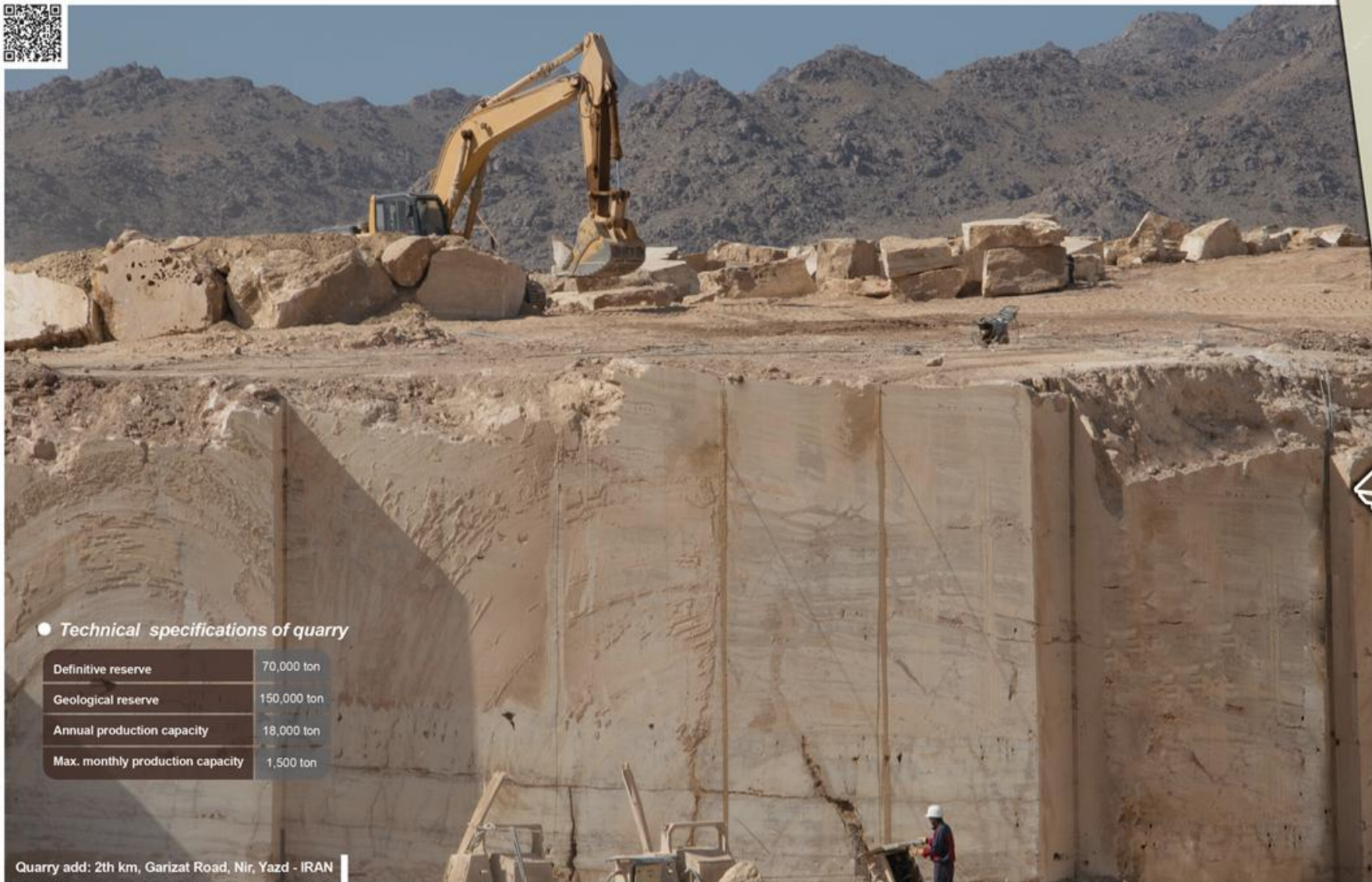


SHAHAB SANG





Nir Onyx Quarry (Bagh e Bid Nir, YAZD)



● *Technical specifications of quarry*

Definitive reserve	70,000 ton
Geological reserve	150,000 ton
Annual production capacity	18,000 ton
Max. monthly production capacity	1,500 ton

Quarry add: 2th km, Garizat Road, Nir, Yazd - IRAN



**SHAHAB SANG**

Nir  
Onyx  
Quarry

Bagh e Bid Nir, YAZD

Nir  
Onyx  
Quarry





Nir Onyx

A LIGHT  
COLOR  
FROM  
PARADISE



SHO-N

Shahab Sang Onyx - Nir

● PHYSICAL ANALYSES of MARBLE

Specific Weight	2.69 Ton / m <sup>3</sup>
Porosity	1.01%
Water Absorbtion	0.81%
Compressive strength (In Dry)	.....
Softening	0.95%

● Nir Onyx Quarry  
Bagh-e Bid, Nir, YAZD



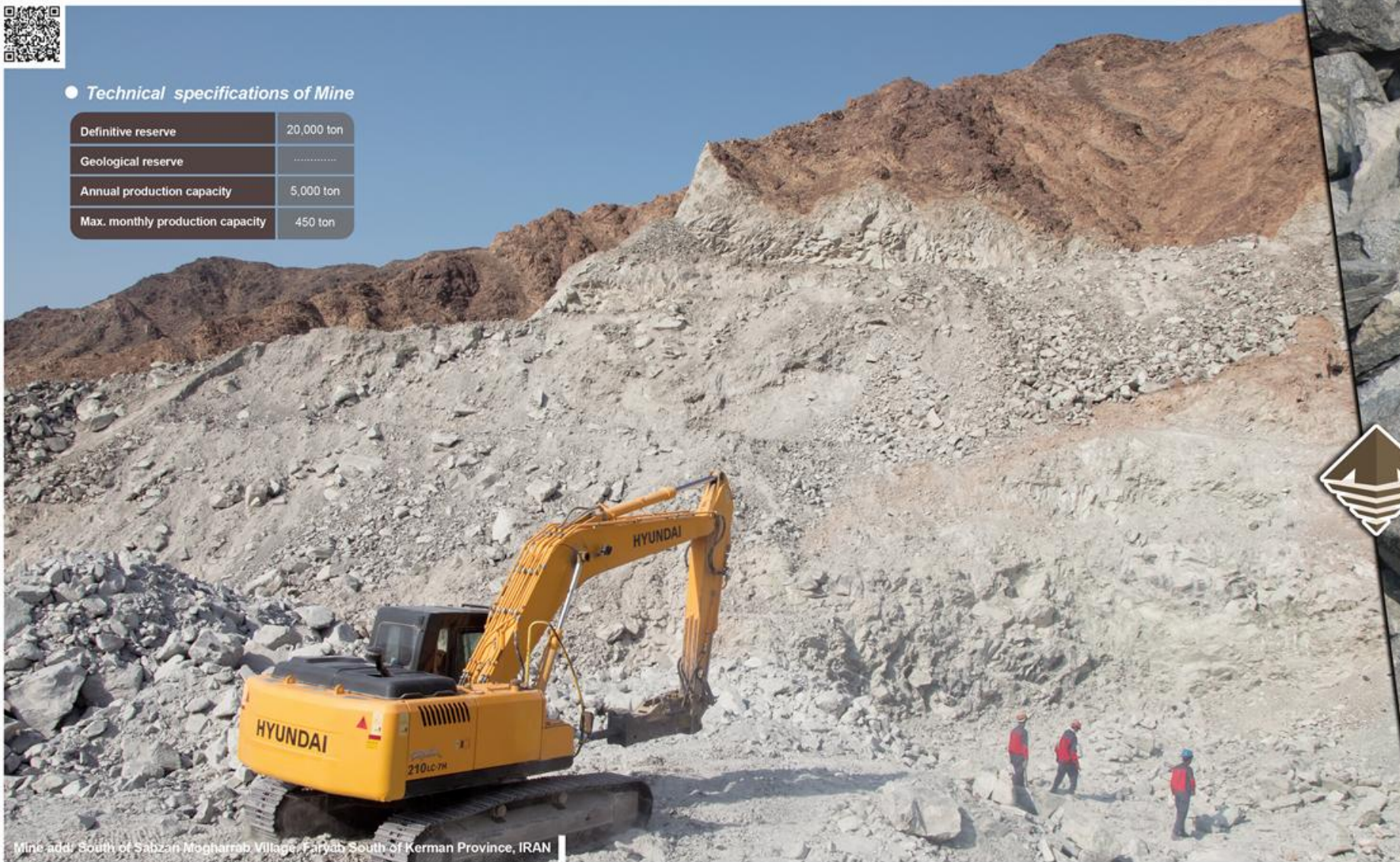
SHAHAB SANG





● *Technical specifications of Mine*

Definitive reserve	20,000 ton
Geological reserve	.....
Annual production capacity	5,000 ton
Max. monthly production capacity	450 ton



Mine addr: South of Sabzan Mogharrob Village, Faryab, South of Kerman Province, IRAN



**SHAHAB SANG**

**Sabzan  
Chromite  
Mine**

Faryab, KERMAN

Sabzan  
Chromite  
Mine





## Sabzan Chromite



● The Sample Extracted From the Sabzan Chromite Mine  $\text{Cr}_2\text{O}_3$  38-40%

### ● CHEMICAL ANALYSES of CHROMITE

$\text{SiO}_2$	10-12%
$\text{Cr}_2\text{O}_3$	38-40%
$\text{MgO}$	24-30%
$\text{Fe}_t$	5-8%
$\text{SO}_3$	<0.05%
$\text{P}_2\text{O}_5$	<0.01%

## ● Sabzan Chromite Mine Faryab, KERMAN



SHAHAB SANG





● *Technical specifications of quarry*

Definitive reserve	5,000,000 ton
Geological reserve	.....
Annual production capacity	1,500,000 ton
Max. monthly production capacity	150,000 ton



Mine add: 2th km ahmad abad mostofi road, Azadegan Highway, Tehran, IRAN



**SHAHAB SANG**

**Boroujerdi  
Sand & Gravel  
Complex**

Azadegan Highway, TEHRAN

Boroujerdi  
Sand & Gravel  
Complex





SHS-B

Boroujerdi Sand & Gravel Complex



SHG-B1

Boroujerdi Sand & Gravel Complex



SHG-B2

Boroujerdi Sand & Gravel Complex



## Boroujerdi Sand & Gravel Complex

- Boroujerdi Sand & Gravel Complex  
Azadegan Highway, TEHRAN



SHAHAB SANG





Central Office add: No. 2, Shahid Golab Blvd., Jenah Highway, Tehran - IRAN



SHAHAB SANG

Central  
Office &  
Showroom

Tehran, IRAN





## Some Exhibition Attendance



Stone + tec Beijing - 2011



Stone + tec Nuremburg - 2012



Stone + tec Beijing - 2014



Iran Con Industry Tehran - 2015



Iran Con min Tehran - 2015



Baku Build Baku - 2015

- Kowsar Sales Unit, Stock  
Tehran, IRAN



**SHAHAB SANG**







Bahabad Stone Factory  
(Bahabad, YAZD)



INDUSTRIAL MINING COMPANY  
**SHAHAB SANG**







**Central Office:**

No.2, Shahid Golab Blvd.,  
Mohammad ali Jenah Highway  
Tehran - IRAN  
Tel : +9821 44 24 77 01 - 4  
Fax : +9821 44 26 53 80  
info@shahab-sang.com  
sales@shahab-sang.com

[www.shahab-sang.com](http://www.shahab-sang.com)